

January 2013

HOW TO -MIGRATE TO A LARGER TIME MACHINE DISK



When your Time Machine backup volume fills up, Time Machine will delete old files to make room for new ones, but sooner or later you may want to have more backup capacity—whether for more files, a longer history, or files from multiple users.

So the natural solution is to switch to a bigger disk (or maybe from a local drive to a Time Capsule with a larger disk).

If you simply switch disks in the Time Machine preference pane, you'll have to start over with a brand-new full backup.

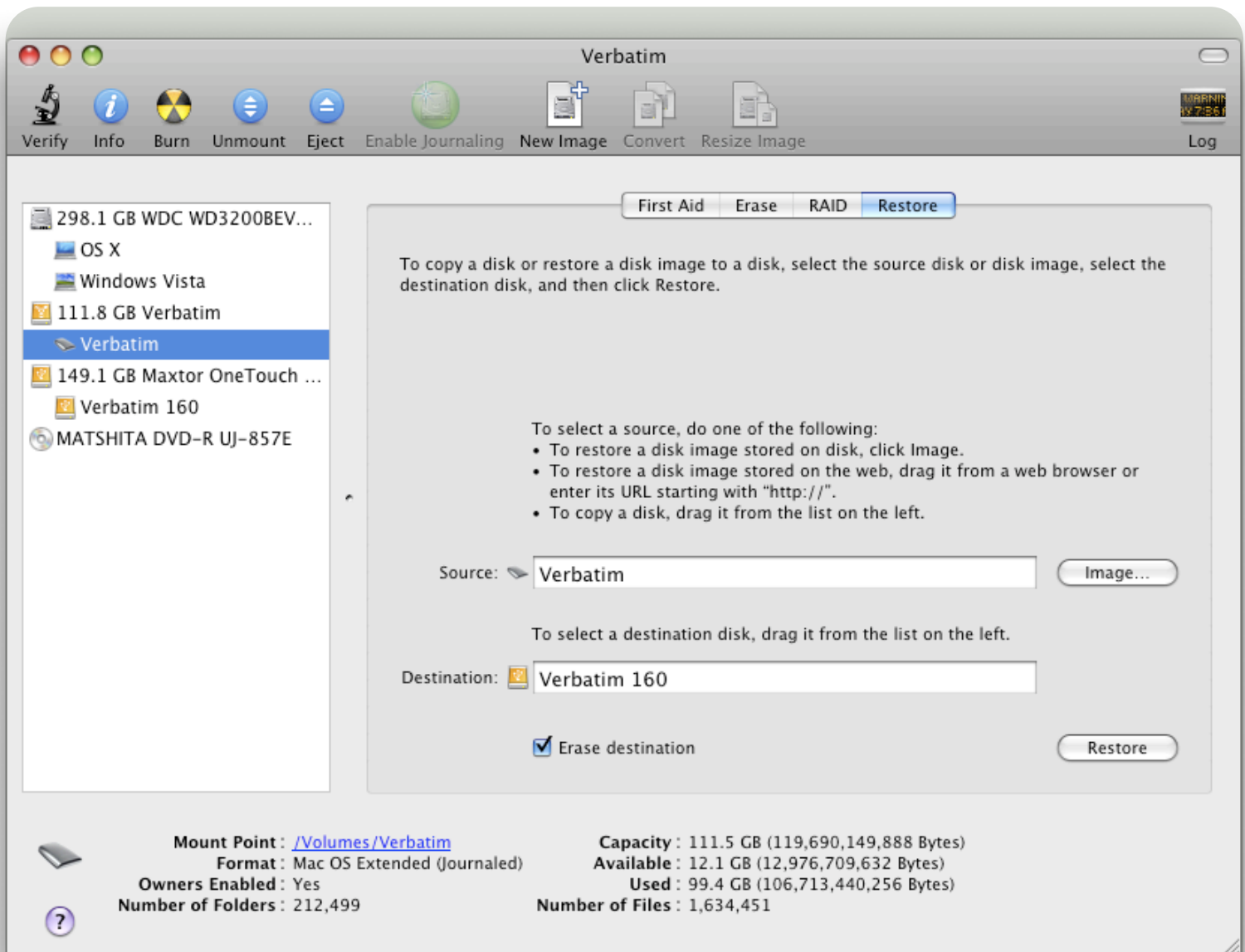
If you prefer to keep the continuity of your existing backups on the new drive, you can—as long as you don't mind jumping through a few hoops.

The procedure is somewhat different depending on whether you're migrating to a new local disk or to a Time Capsule.

MIGRATE TO A LOCAL DRIVE

If you're moving your Time Machine backups from one local drive to another, make sure both the OLD drive and the NEW drive are connected and mounted in the Finder. Then follow these instructions:

1. In the Time Machine pane of System Preferences, turn Time Machine **OFF**.
2. Open Disk Utility and Partition the NEW Disk as a single volume, using either **GUID Partition Table** (if you're using an Intel-based Mac) or **Apple Partition Map** (for a PowerPC-based Mac). & **Mac OS Extended (Journaled)**
3. With your NEW Disk still selected, click **Restore**.
4. From the list on the left, **drag your current backup volume** (that's the indented name, not the higher-level disk name) into the **Source field**.
5. Now go back to the list on the left and **drag your new Time Machine backup volume** (again, that's the indented name, not the higher-level disk name) into the **Destination field**. Make sure **Erase Destination** is checked.



6. Click **Restore**. When the confirmation alert appears, **click Restore again**.

Disk Utility copies your existing backup volume onto the new volume. Depending on the amount of data you have and the type of interface your drives use, this process could take anywhere from hours to days.

7. When the copying is finished, quit Disk Utility, and **Eject** both **old** and **new backup volumes** in the Finder.

8. In the Time Machine preference pane, **select the new backup volume** and make sure Time Machine is turned **ON**.

Time Machine should pick up where it left off the last time you backed up to your local drive.

MIGRATE TO A TIME CAPSULE OR NETWORK VOLUME

If you've been backing up to an external drive for a while and then you buy a Time Capsule, you may want to move your existing Time Machine backups to the Time Capsule rather than starting over from scratch. Likewise, if you already have a Time Capsule and buy a larger one, you may again want to move your backups to the larger volume— or you may want to migrate from a local drive to a network volume.

Use the same procedure for any of these situations:

Tip: Leave the computer in the same room as the Time Capsules, or use an Ethernet cable to connect the Mac to the Ethernet port on the existing Time Capsule, then use another Ethernet cable to connect from the existing Time Capsule to the new Time Capsule.

1. **Configure your new Time Capsule** for the home network. See the documentation that came with your Time Capsule for information about setting it up on the home network.
2. Open Time Machine preferences in System Preferences (choose Time Machine menu -> Time Machine Preferences...).
Slide the Time Machine switch to **ON**.
Select the **new Time Capsule** or network volume as your backup destination, and let the first backup begin.
3. As soon as Time Machine gets past the “**Preparing backup**” stage and **starts copying data**, move the switch to **OFF**.
4. In the Finder, select your **new Time Capsule** or network volume and double-click the folder inside it that contains your Time Machine backups—the name may vary, but it's usually the only folder on the disk. (If a Time Capsule doesn't mount automatically, click 'Connect As' and enter your 'user name and password'.) In this folder is a disk image containing the backup you just started and then quit. Double-click the image, which should then mount in the Finder.
5. If you're moving from a local drive to the Time Capsule or network volume, make sure the local drive is connected and mounted in the Finder. If you're moving from one Time Capsule to another, make sure the **old Time Capsule** is mounted in the Finder, and also mount the disk image on it that contains your existing backups (using exactly the same procedure as in Step 4).
6. Open Disk Utility (in /Applications/Utilities). Select any volume in the list on the left and click **Restore**.

7. From the list on the left, **drag your current backup volume** (that's the indented name, not the higher-level disk name) into the **Source field**.

8. Go back to the list on the left and **drag the mounted disk image (which should be named "Time Machine Backups")** into the **Destination field**. Make sure **Erase Destination is checked**.

9. Click **Restore**. When the confirmation appears, **click Restore again**.

10. Disk Utility copies your existing backup volume onto the new volume on your Time Capsule or network server. Depending on the amount of data you have and whether you use a wired or wireless network, this process could take anywhere from a few hours to several days.

11. When the copying is finished, **quit Disk Utility**, and **Eject** your Time Capsule or network volume in the Finder.

12. In the Time Machine preference pane, switch it back **ON**.

That's it. Time Machine should pick up where it left off the last time you backed up to your local drive.

Migrate to a Larger Time Machine Disk



Ronni

January 2013